

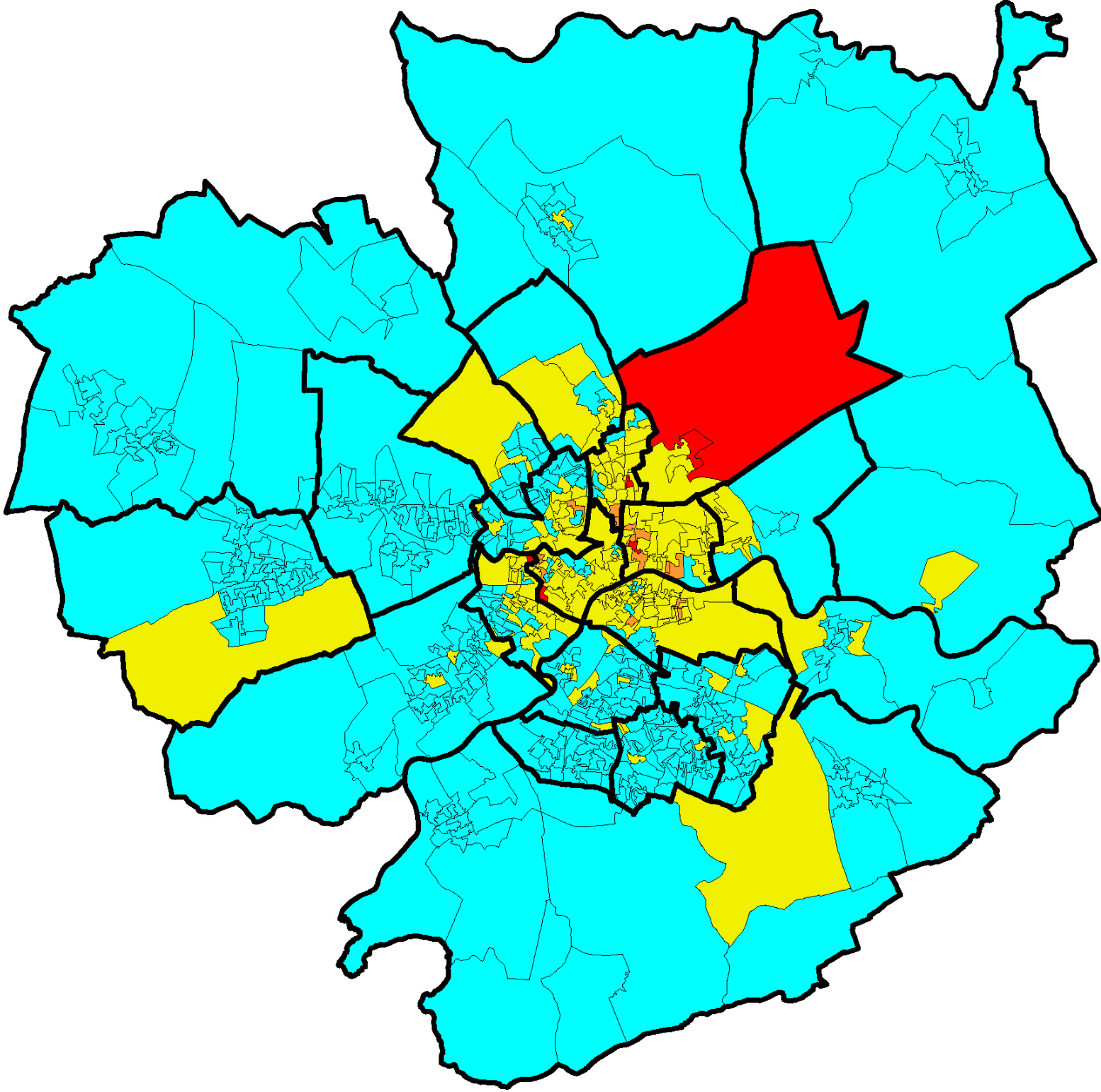
Annex 1: Spread of Student Housing 2000-2010

Proportion of student council tax exemptions
as a percentage of all households (2000)

- 20.1 to 100 (6)
- 10.1 to 20 (15)
- 1.1 to 10 (171)
- 0 to 1 (427)

□ Output Area boundary

□ Ward boundary

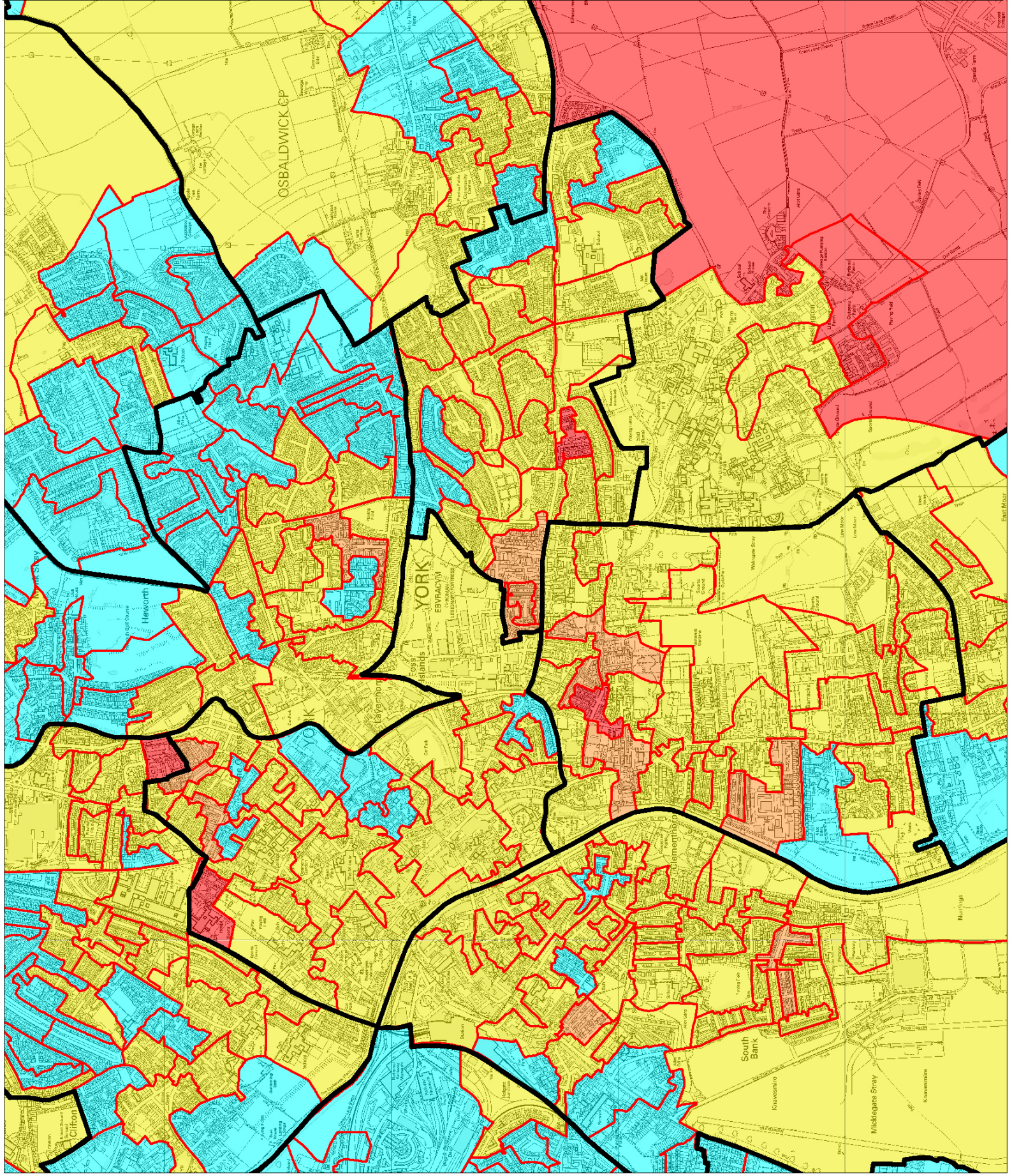


**Proportion of student council tax exemptions
as a percentage of all households (2000)**

- 20.1 to 100 (6)
- 10.1 to 20 (15)
- 1.1 to 10 (171)
- 0 to 1 (427)

Output Area boundary

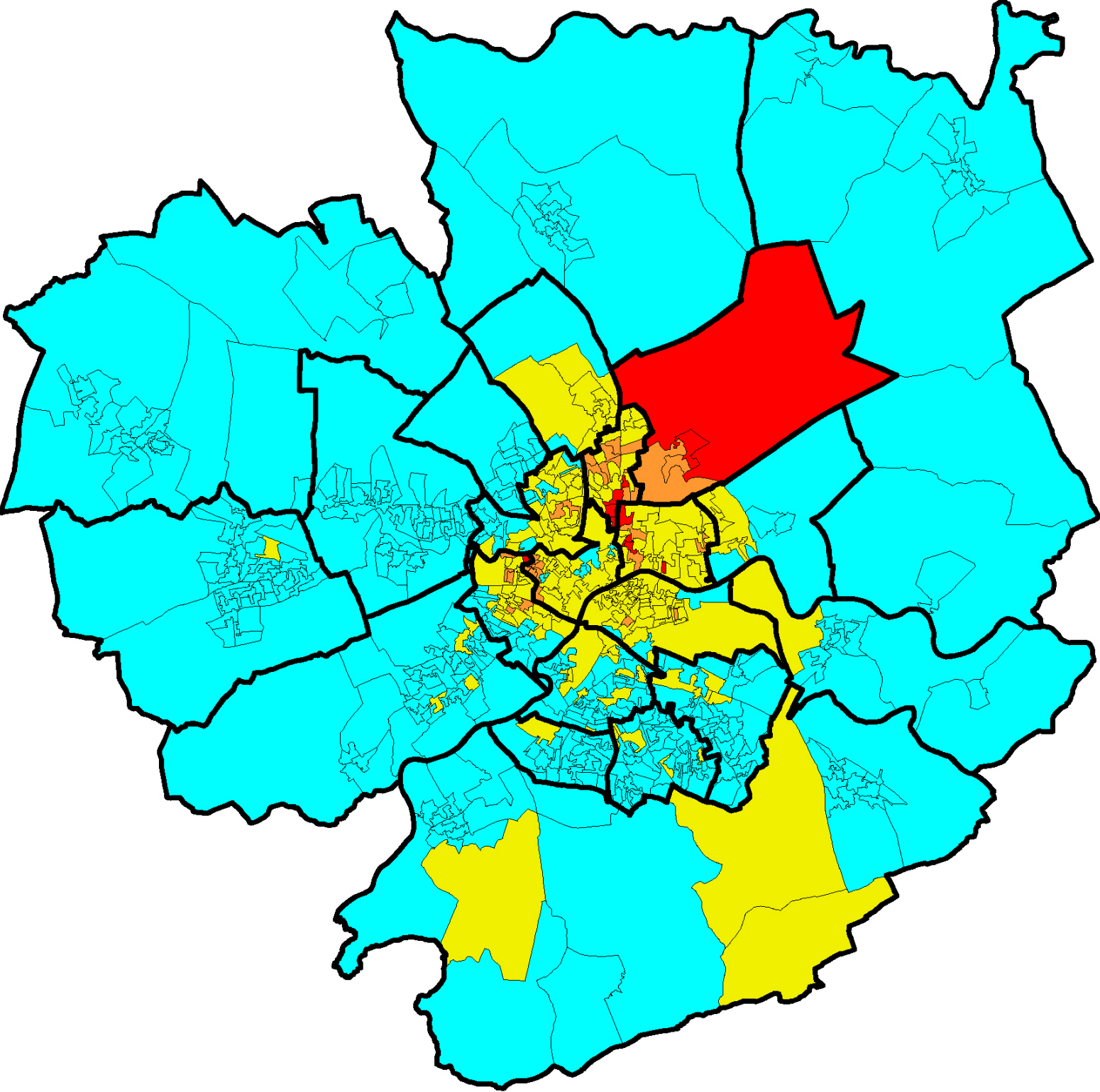
Ward boundary



Proportion of student council tax exemptions as a percentage of all households (2005)

- 20.1 to 100 (11)
- 10.1 to 20 (30)
- 1.1 to 10 (179)
- 0 to 1 (399)

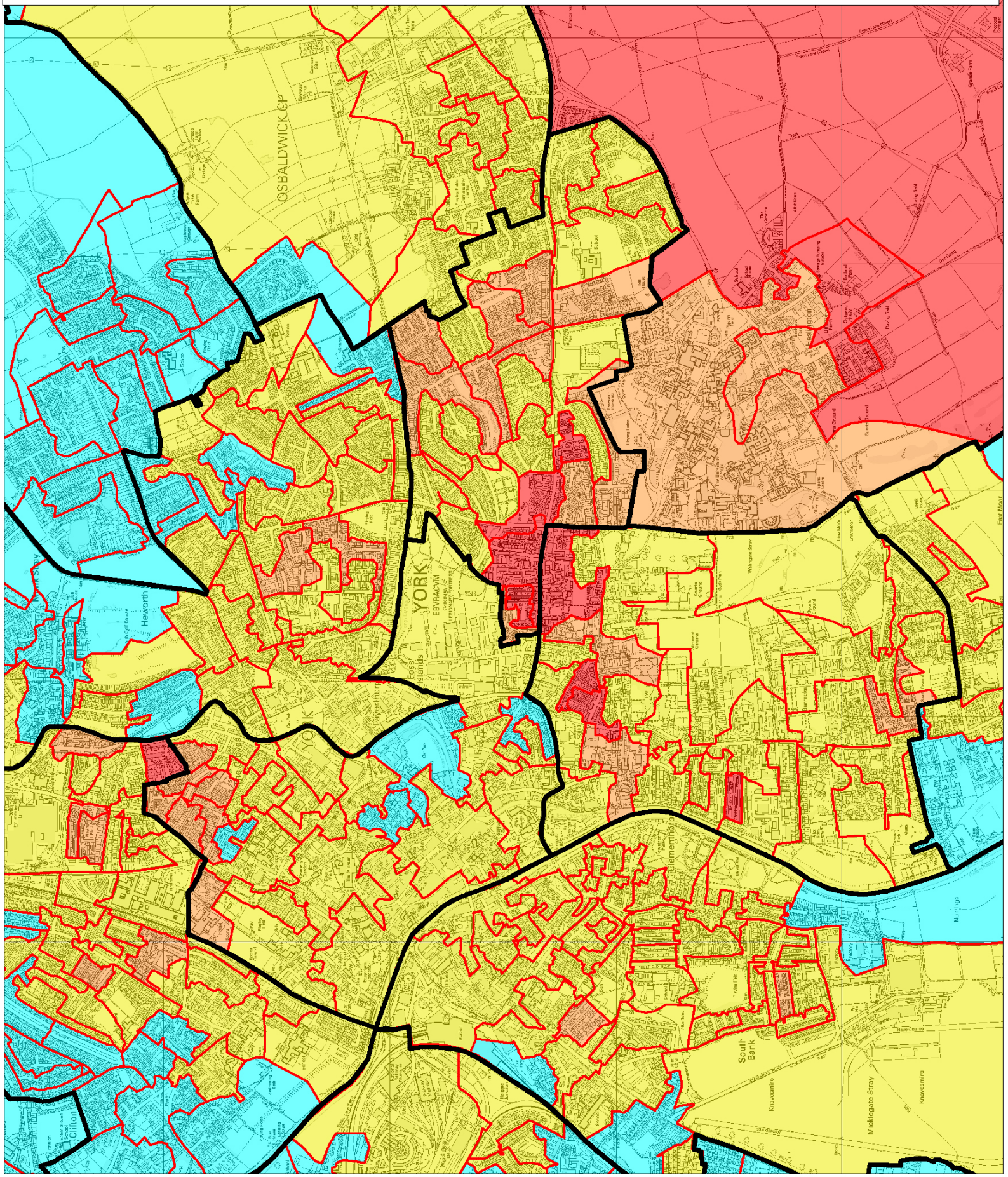
- Ward boundary
- Output Area Boundary



Proportion of student council tax exemptions as a percentage of all households (2005)

- 20.1 to 100 (11)
- 10.1 to 20 (30)
- 1.1 to 10 (179)
- 0 to 1 (399)

Ward boundary
 Output Area Boundary

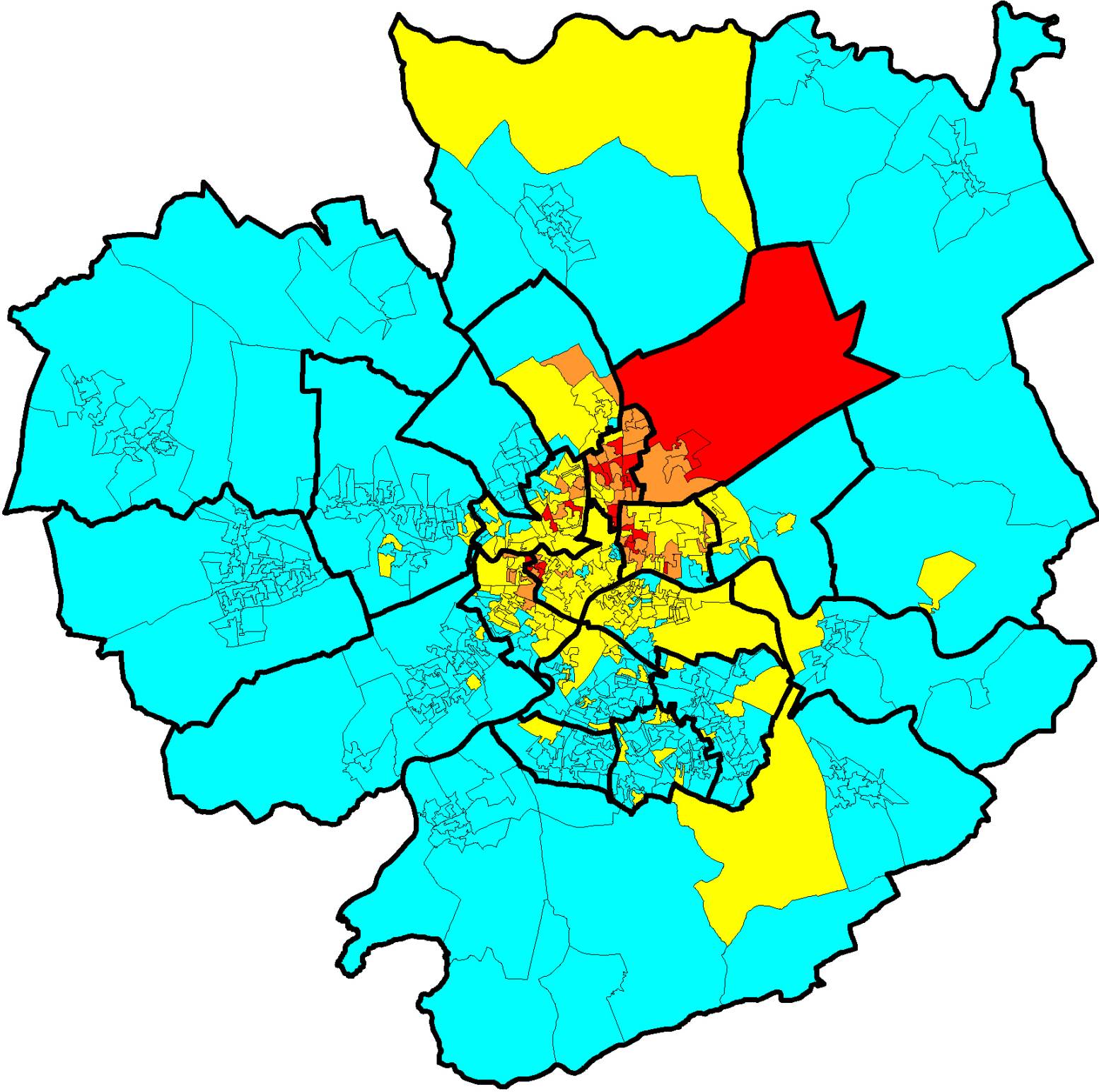


Proportion of student council tax exemptions
as a percentage of all households (2010)

- 20.1 to 100 (19)
- 10.1 to 20 (40)
- 1.1 to 10 (167)
- 0 to 1 (393)

Ward boundary

Output Area boundary



Proportion of student council tax exemptions
as a percentage of all households (2010)

- 20.1 to 100 (19)
- 10.1 to 20 (40)
- 1.1 to 10 (167)
- 0 to 1 (393)

Ward boundary

Output Area boundary

